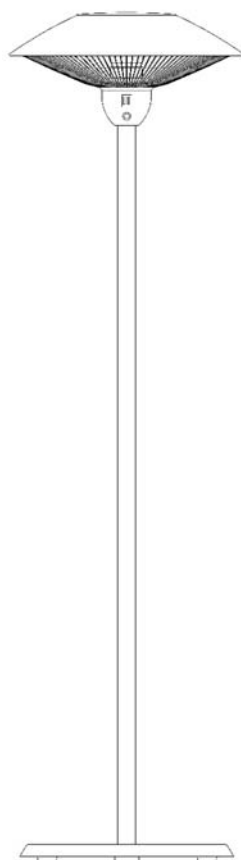


INSTRUCTION

【FREE-STANDING ELECTRIC HEATER】

1641223-01-0



Please keep this instruction for future reference.
The picture is for reference only. Please adhere to the original products.

This manual contains important safety information concerning the maintenance, use and operation of this product. Failure to follow the instructions contained in this manual may result in serious injury. If you are unable the contents of this manual, please bring it to the attention of your supervisor. Do not operate this product unless you have read and understand the contents of this manual.

IMPORTANT SAFETY MEASURES

When using any kind of electrical appliance, some basic safety precautions must always be followed, including the following:

- 1) To avoid possible danger, keep heater head on highest position (not less than 1.8m) when the heater on.
- 2) To avoid possible electric shocks, do not place the cable, plug or appliance in water or in any other liquid. Do not insert screwdrivers or metallic items inside the appliance.
- 3) If the power cable is damaged, it must be replaced by the manufacturer, its service technician or by someone else authorized by the manufacturer in order to avoid a hazard. In the event of handing of appliances by non-authorized people, the guarantee will immediately cease to be valid.
- 4) Do not use appliances if they are damaged.
- 5) To disconnect electrical appliances, wait until the engine stops and then unplug the cable from the electric socket.
- 6) Do not leave appliances working unattended. Ensure that the engine has come to a complete stop before dismantling appliances. Unplug appliance after each use.
- 7) This appliance can be used by children aged from 8 years and above and persons with reduced physical, sensory or mental capabilities or lack of experience and knowledge if they have been given supervision or instruction concerning use of the appliance in a safe way and understand the hazards involved.
- 8) Do not dispose of this product as unclassified municipal rubbish. Due to the use of electrical and electric parts, this product must be collected separately
- 9) **CAUTION-** Some parts of this product can become very hot and cause burns. Particular attention has to be given where children and vulnerable people are present.
- 10) **WARNING:** In order to avoid overheating, do not cover the heater.
- 11) The heater must not be located immediately below a socket-outlet.
- 12) To avoid possible electric shock, please placed the power cord in wire slot.

NOTICE

- 1) The power supplied to this unit must comply with electrical requirement on its label. Damage or fire may result if the incorrect power used.
- 2) Do not use the heater in somewhere with flammable objects, gas, dust.
- 3) In order to avoid scalding, forbid to touch the heater when it works.
- 4) Forbid to put anything on product surface when it is working.
- 5) To avoid possible electric shocks, do not use this heater in the immediate surroundings of a bath, a shower or a swimming pool.
- 6) In order to avoid fire, do not use the heater with automatic electrified sequencer, timer and other devices.
- 7) Children of less than 3 years should be kept away unless continuously supervised. Children shall not play with the appliance.
- 8) Children aged form 3 years and less than 8 years shall only switch on/off the appliance provided that it has been placed or installed in its intended normal operating position and they have been given supervision or instruction concerning use of the appliance in a safe way and understand the hazards involved. Children aged from 3 years and less than 8 years shall not plug in, regulate and clean the

appliance or perform user maintenance.

- 9) Turn off all switches and unplug the heater if an emergency situation occurs.
- 10) Please contact with seller if it does not work properly. Do not try to repair the heater by yourself.
- 11) Please contact the seller if you find other problems not covered in this operation manual.
- 12) Cleaning and user maintenance shall not be made by children with supervision.

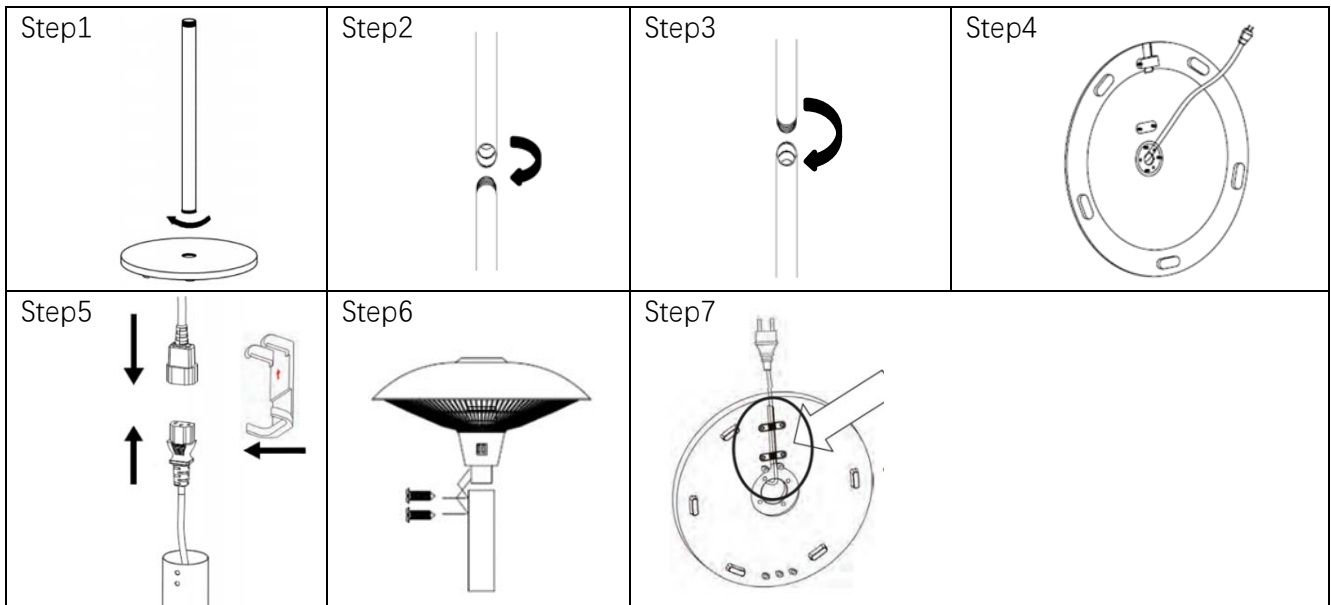
SPECIFICATION

Model:	1641223-01-0
Feature:	Rocker Switch
Remote:	No
Voltage:	220-240V~50-60Hz
Power:	0/900/1200/2100W
Weight:	15.5kg
Size:	57 x 57 x 205cm

Parts	Description	Quantity
A	Heater Head	1
B1	Top Pole	1
B2	Middle Pole	1
B3	Bottom Pole	1
C	Base	1
D	Tapping Screw	2
E	Clip	1
F	Manual	1

INSTALLATION

Please check all the items against the parts list after opening the box. Only all the items are complete, the installation could be followed.



- 1) Connect the bottom pole to base.
- 2) Connect the middle pole to bottom pole by hand.
- 3) Connect the top pole with middle pole by hand.
- 4) Feed the power cord through the base and pull through around 1.75-2m of cable.
- 5) Connect the power cord plug to heater head. Make sure the clip is firm and arrow up.
- 6) Push the heater head onto the top pole and fix in position by 2 tapping screws. Make sure the power cord is completely extracted out of the pole and fix the power cord on the base by power brackets.
- 7) Please fix the power cord as shown.

OPERATION



- Left switch for 900W;
- Right switch for 1200W.
- Both switch for 2100W

CLEANING AND MAINTENANCE

- 1) Always turn off and unplug the heater before cleaning.
- 2) To clean the heater, use a damp cloth and make sure to dry excess water once cleaned.
- 3) Only after turn off the heater, can move the heater with the leaning 45° .

***ATTENTION** Do not put the heater directly into any container with water in it.



To comply with European Directive 2002/96/EC concerning old electric and electronic equipment and its implementation in national laws, old electric tools have to be separated from other waste and disposed of in an environment-friendly fashion, e.g. by taking to a recycling depot.

TROUBLE SHOOTING

- 1) If the heater does not emit heat after turning on, please check the power cord whether plugged into electric socket properly.
- 2) In first use, it is normal if the heater appears small amount of smoke and some smell because of protective-oil evaporation.