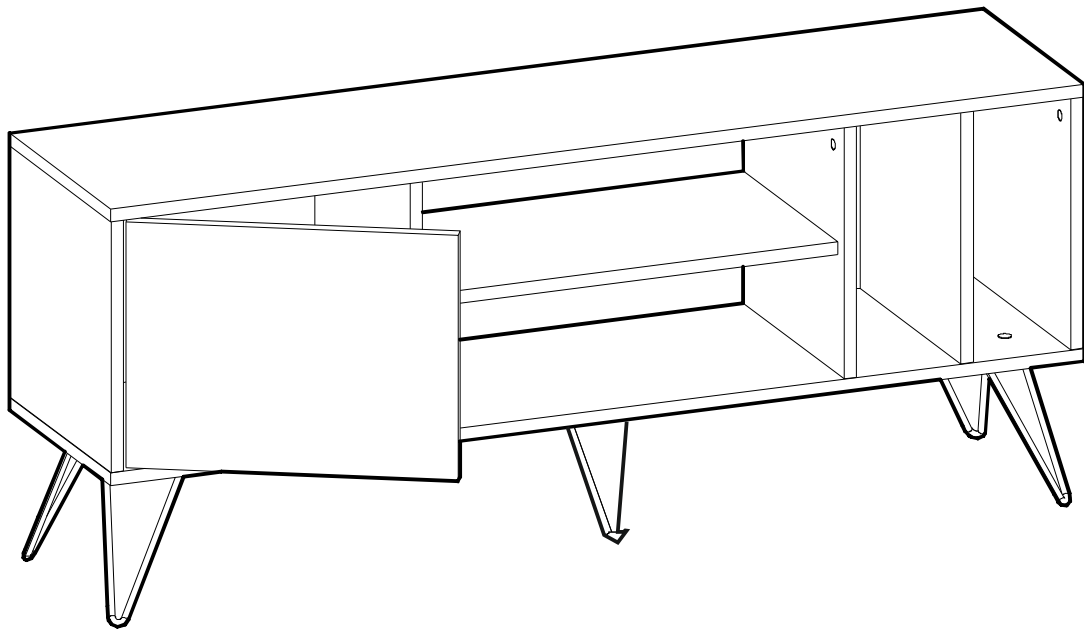


MISTICO¹⁴⁰⁰

Assembly Instruction



please scan the QR code
for installation video



Valued Customer,

We design and carefully manufacture our products for our customers, We wish that our customers to have fun while they are doing their new furniture

The product you just purchased was subjected to all sorts of tests and controls before sending out to you.

Hope you enjoy your new furniture.

Değerli Müşterimiz,

Ürünlerimizi siz değerli müşterilerimiz için tasarlıyor ve özenle üretiyoruz. Müşterimizin yeni ürünlerini kurarken eğlenmesini istiyoruz.

Size kargolamadan önce, satın almış olduğunuz ürünün tüm kontrolleri yapılıyor.

Yeni ürününüz evinize çok yakışacak.



Before starting, please check all components and accessories according to the provided list. If you purchased more than one product, to prevent confusion, be sure that you completed the first product, then start the next one. Please make sure that you select correct numbered part and use specific connector to assemble. We do not recommend any modification or rotation in assembly. Please follow the manual carefully.

Kurulumu başlamadan önce, lütfen tüm aksesuarları elinizdeki kurulum talimatına göre kontrol ediniz. Eğer birden fazla ürün satın aldıysanız, karışıklığı önlemek için lütfen ürünleri ayrı ayrı kurunuz. Bir ürünü kurmadan önce diğer ürüne başlamayınız. Ürünü kurarken kurulum talimatına göre hareket ediniz. Ürününüze ekleme yapmanızı tavsiye etmiyoruz.



Furniture parts are going through several manufacturing procedures. During this process, parts can have little dust or marks. Please clean the parts with damp cloth before assembly to get the best result. Usual cleaning would be suce.

Ürününüz üretilirken pek çok aşamadan geçiyor. Bu süreç boyunca üzerinde toz ve bazı işaretler olabilir. Tozları temiz ve nemli bir bez ile silebilirsiniz. İşaretleri ise tiner yardımıyla çıkarabilirsiniz.



Although all products are carefully manufactured and packed, sometimes we experience damage during transportation. In such cases, please check the damaged part, note the part number written on the part and do not hesitate to contact us

Ürünlerimiz özenle üretilmesine ve dikkatle paketlenmesine rağmen, bazen taşıma esnasında hasar meydana gelebilir. Böyle durumlarda hasar gören parçayı kurulum talimatı yardımıyla tespit ederek bizden isteyebilirsiniz. Bir sorunla karşılaştığınızda bizimle iletişime geçmekten çekinmeyiniz.



Do not use your furniture for out of purposes. If you would like to use it out of purpose or would like to do some modification or rotation, please contact us for more details.

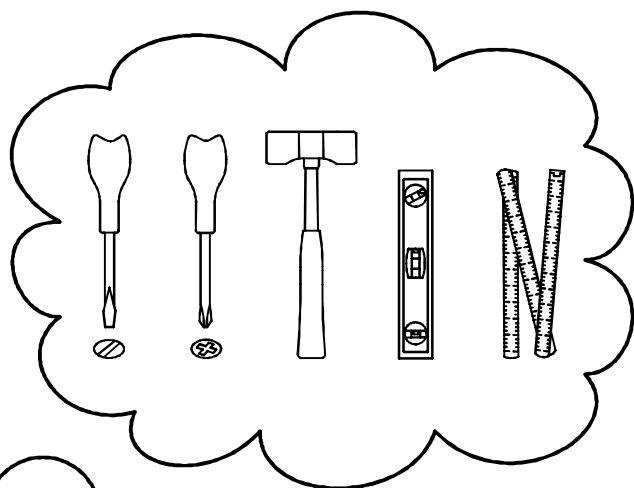
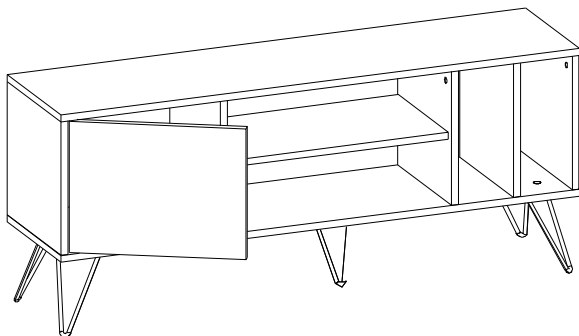
Please do not expose your furniture to excessive heat, cold and humidity because product can be affected negatively.

If you need your product to mount on the wall, Please use suitable rawlplug for your wall type. We send you rawlplugs suitable for concrete and brick walls.

Lütfen ürününüzü kullanım amacı dışında kullanmayınız. Böyle durumlarda üretici firma hiçbir sorumluluk kabul etmemektedir.

Ürünü uzun yıllar boyunca kullanmak istiyorsanız, aşırı ısıya, soğuğa ve neme maruz bırakmayınız.

Eğer ürününüzü duvara monte etmeniz gerekiyorsa, Gönderilen dübel beton duvarlara uygundur. Lütfen duvar tipinize uygun dübel temin ediniz.

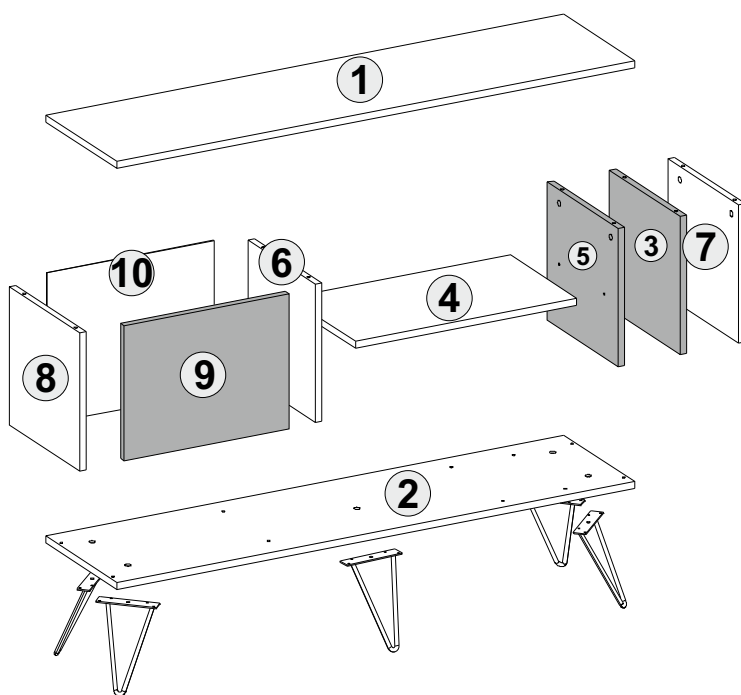


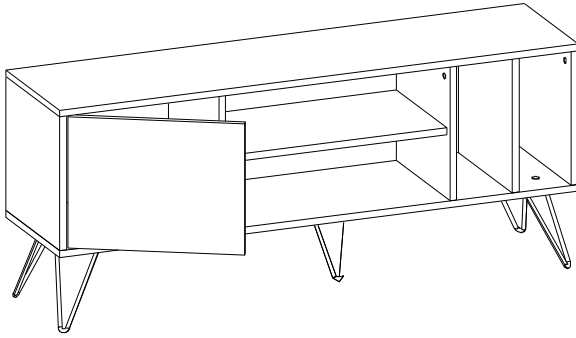
MISTICO

Disassembled Parts

Part#1	1x
Part#2	1x
Part#3	1x
Part#4	1x
Part#5	1x
Part#6	1x
Part#7	1x
Part#8	1x
Part#9	1x
Part#10	1x

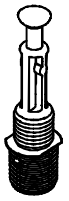
Total 10x





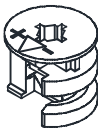
MISTICO

Tools & Installation Components



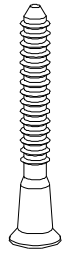
A23 Q10 minifix screw

10x



A02 15x14 minifix head

10x



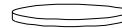
A17 6x50 screw

10x



A19 3,5x18 screw

28x



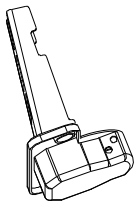
A21 Q15 sticker

13x



A21 Q15 sticker

5x



A21 concealed hinge base

2x



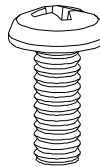
A24 aks37 hinge mounting plate

2x



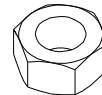
A28 nail

8x



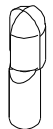
A19 m6x20 bolt

5x



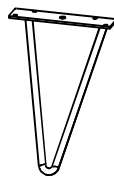
A20 m6 nut

5x



P20 pin connector

4x

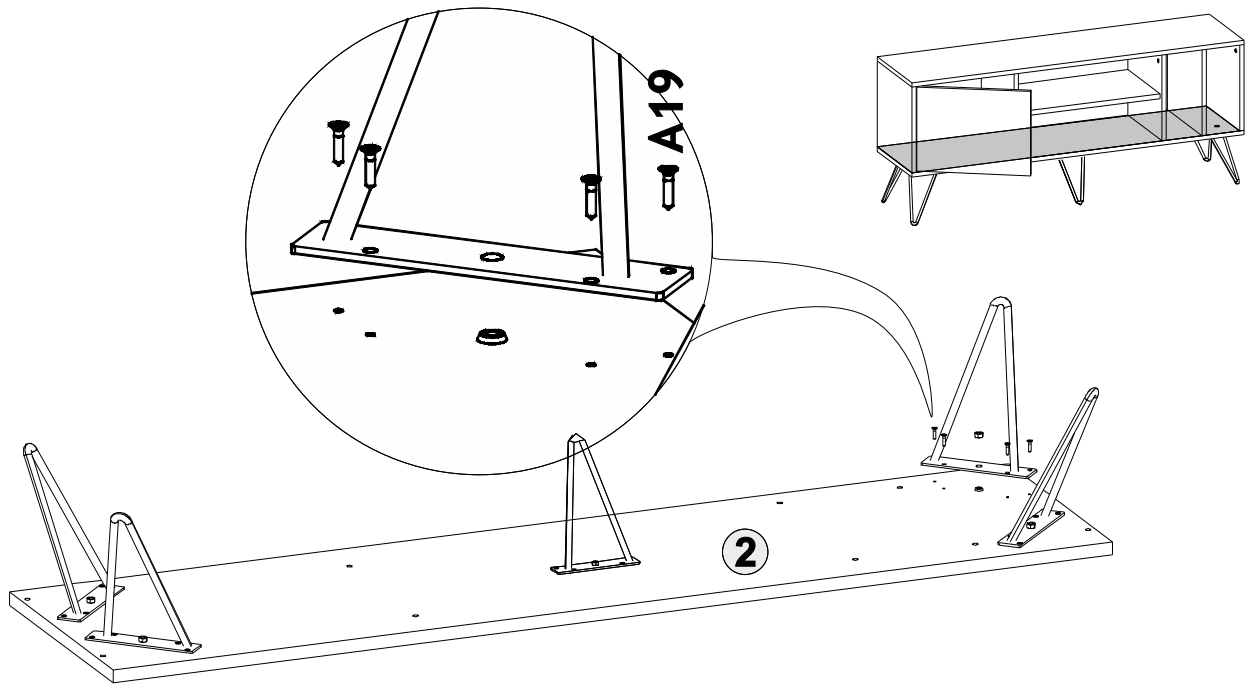


metal leg

5x

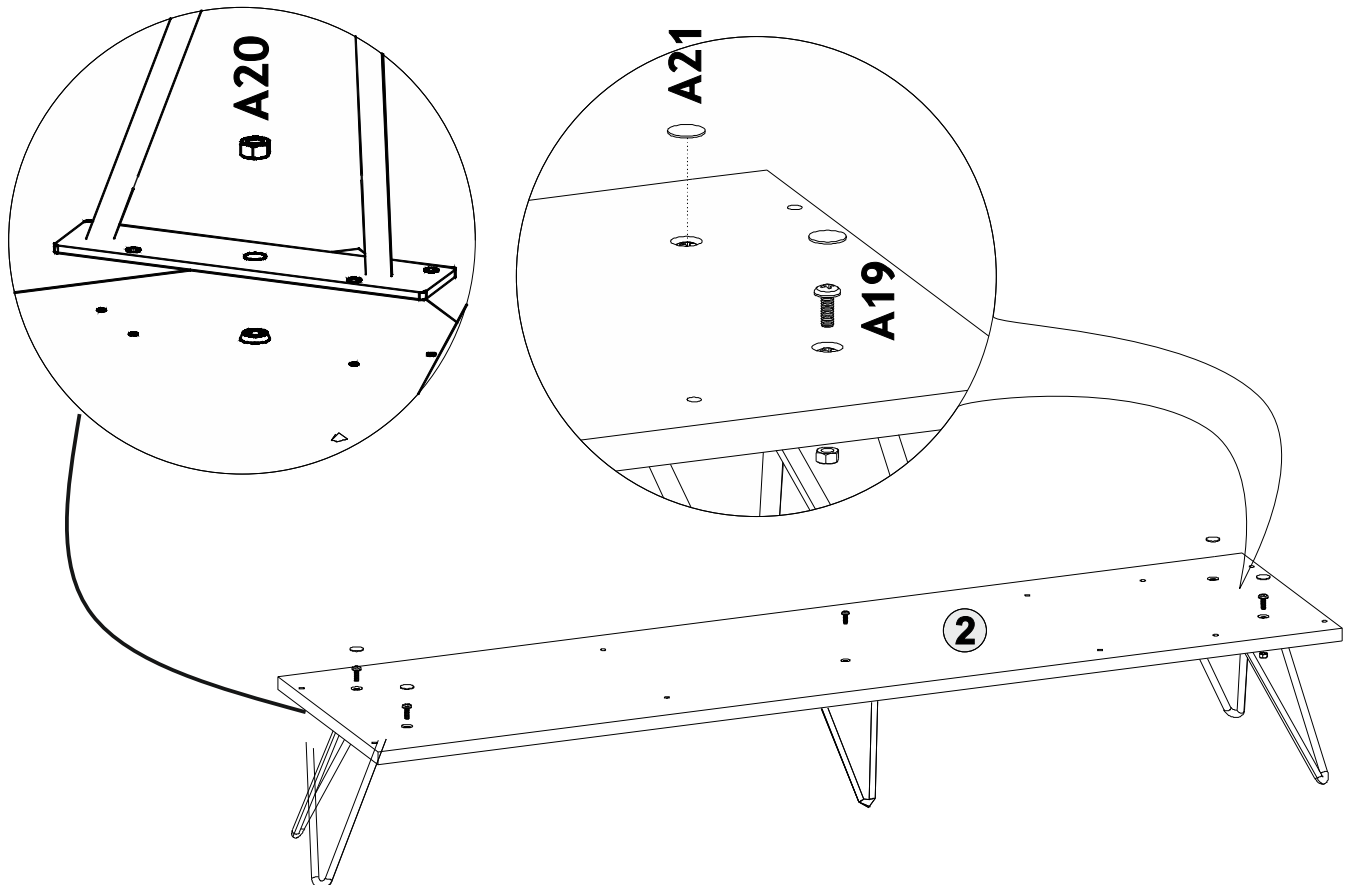
Step 1

- Attach 5 metal legs to the wood part 2 using A19 screws as shown below.



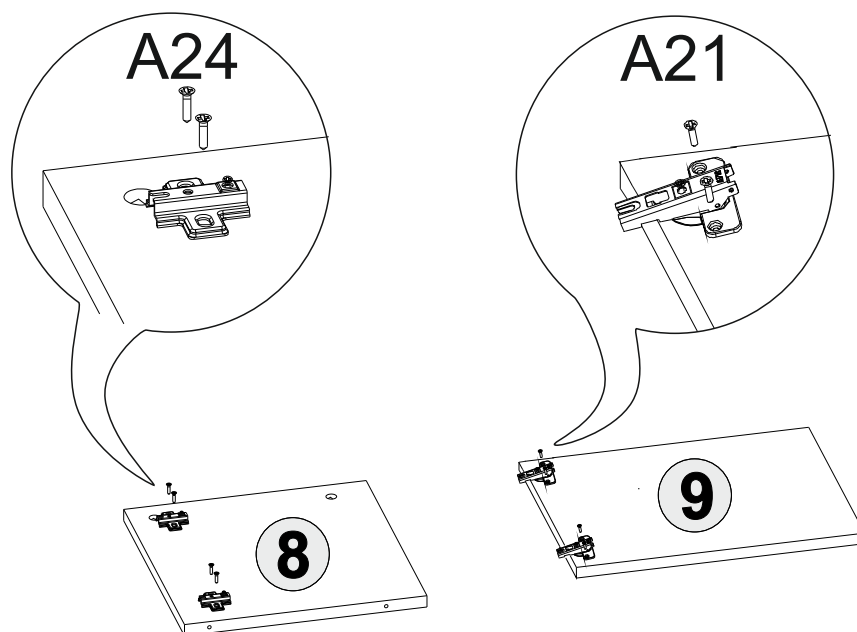
Step 2

Fasten 5 metal legs to the wood part 2 using A19 bolts and A20 nuts as shown below.
- Cover the A19 bolts' head with A21 stickers for the better look of your TV stand as shown below.



Step 3

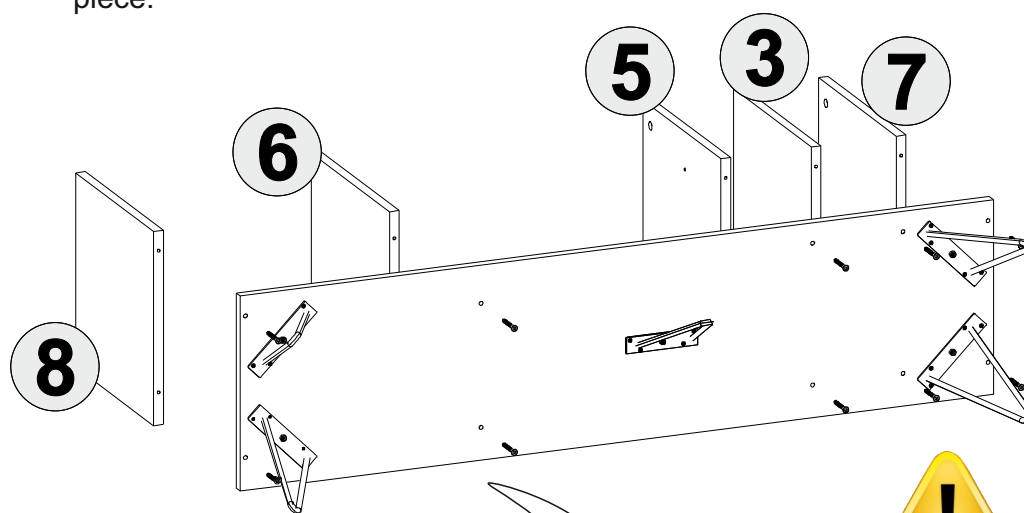
- Attach A24 hinge mounting plate to the pre-drilled trace holes of the part 8 using A19 screws.
- Attach A21 concealed hinge base to the pre-drilled hole of the part 9 using A19 screws.



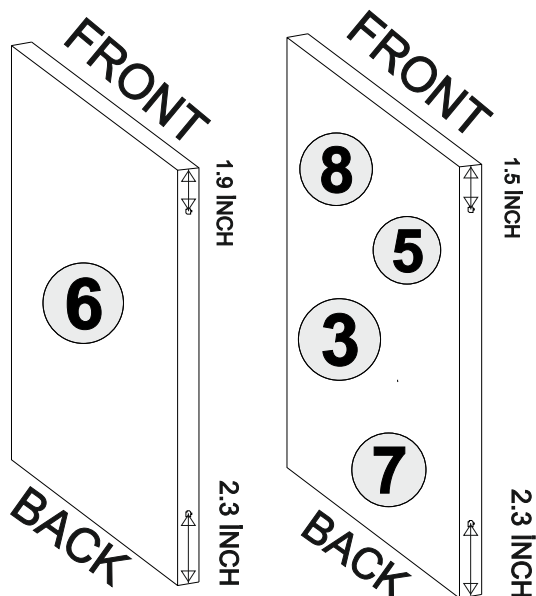
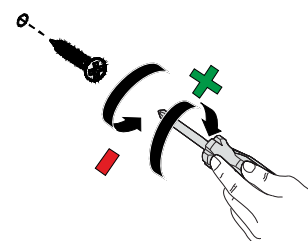
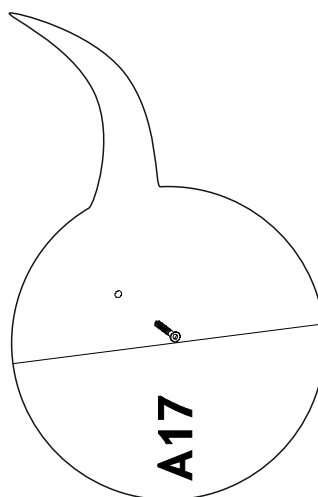
Step 4



- Put the parts 8, 6, 5, 3, 7 and part 2 together using A17 screws as shown below.
- NOTE that the holes of part 8, 6, 5, 3 and 7 are not in the same distance. Part 8, 5, 3 and 7 holes are located 1.5 inches from the front and 2.3 inches from the back side of the piece. Part 6 holes are located 1.9 inches from the front and 2.3 inches from the back side of the piece.

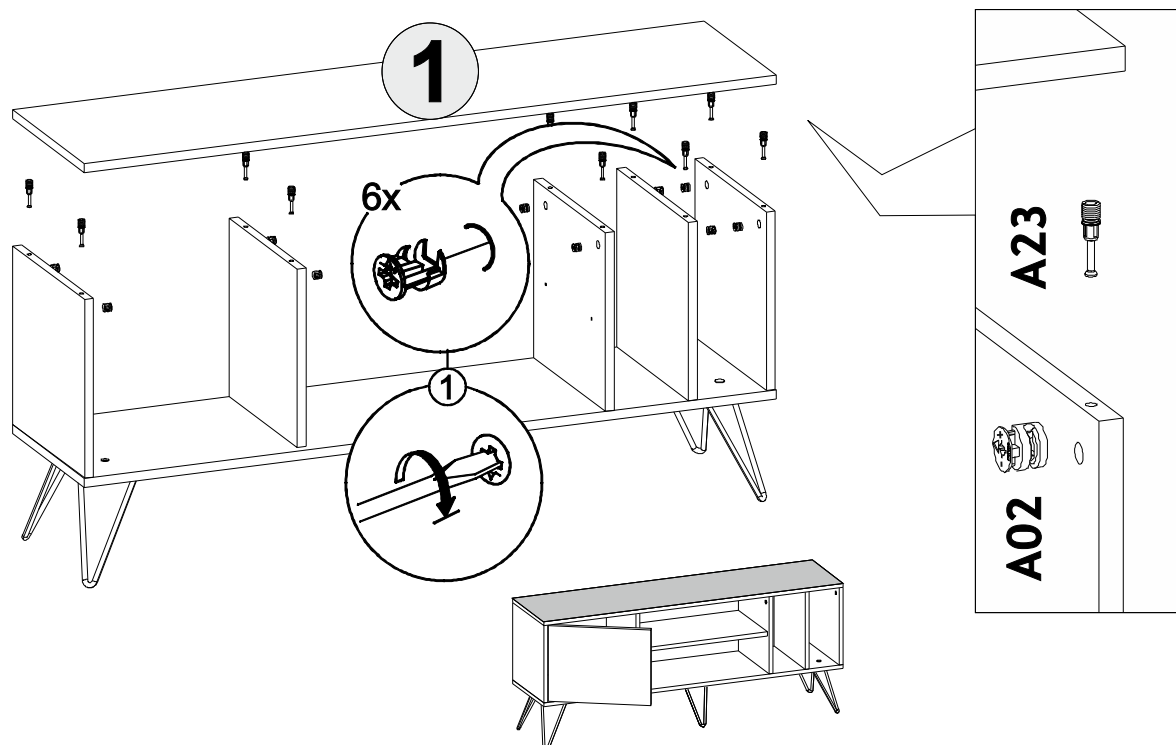


The holes are not countersunk. Push the screw A17 through the hole until its head sits flush with the wood surface. The screw head should not protrude above the surface



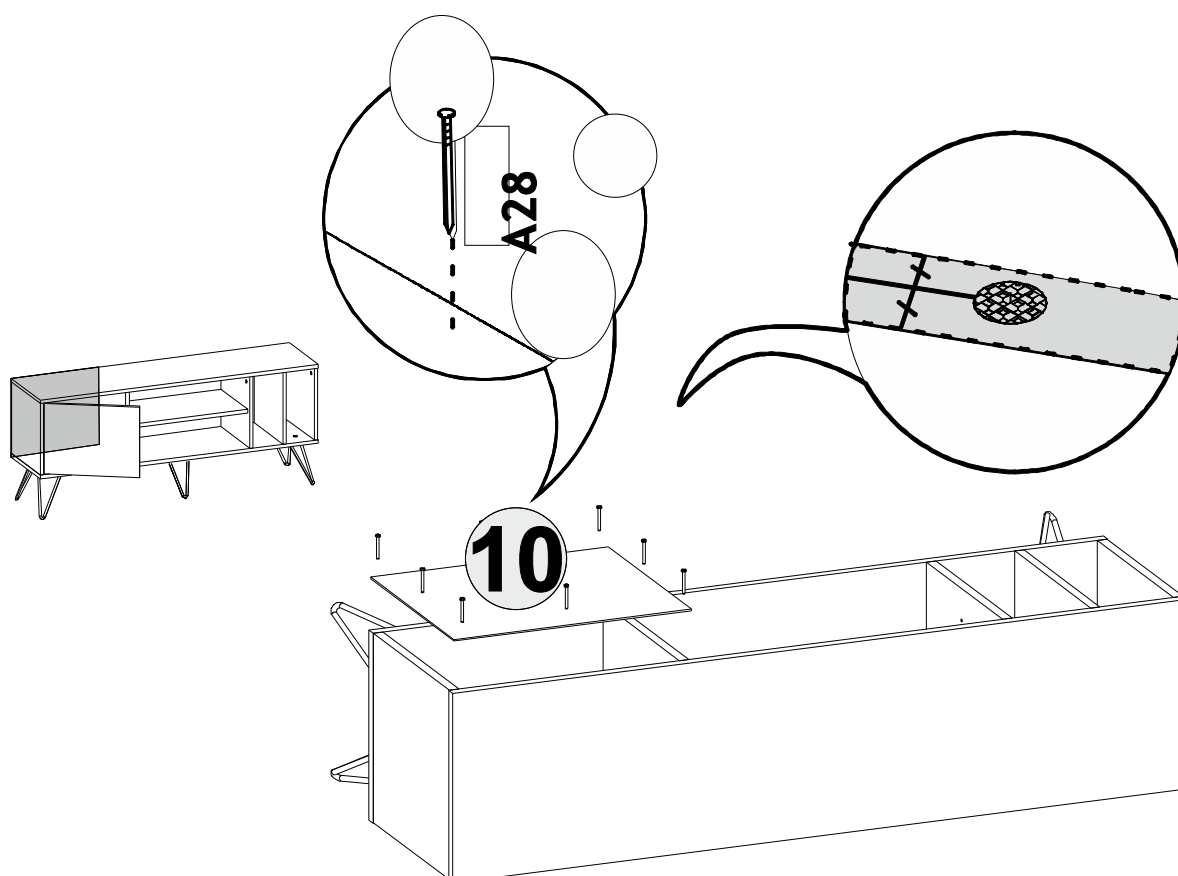
Step 5

- Place the A23 minifix screw into the pre-drilled holes of the part 1.
- Place the A02 minifix head into the assembled part 8, 6, 5, 3 and 7. NOTE that the minifix head arrow should be placed in the direction of upper wood hole.
- Attach the part 1 to the body we assembled in the previous steps and screw the A02 minifix heads to + or clockwise direction until its locked. Do not go any further.

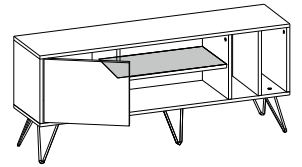
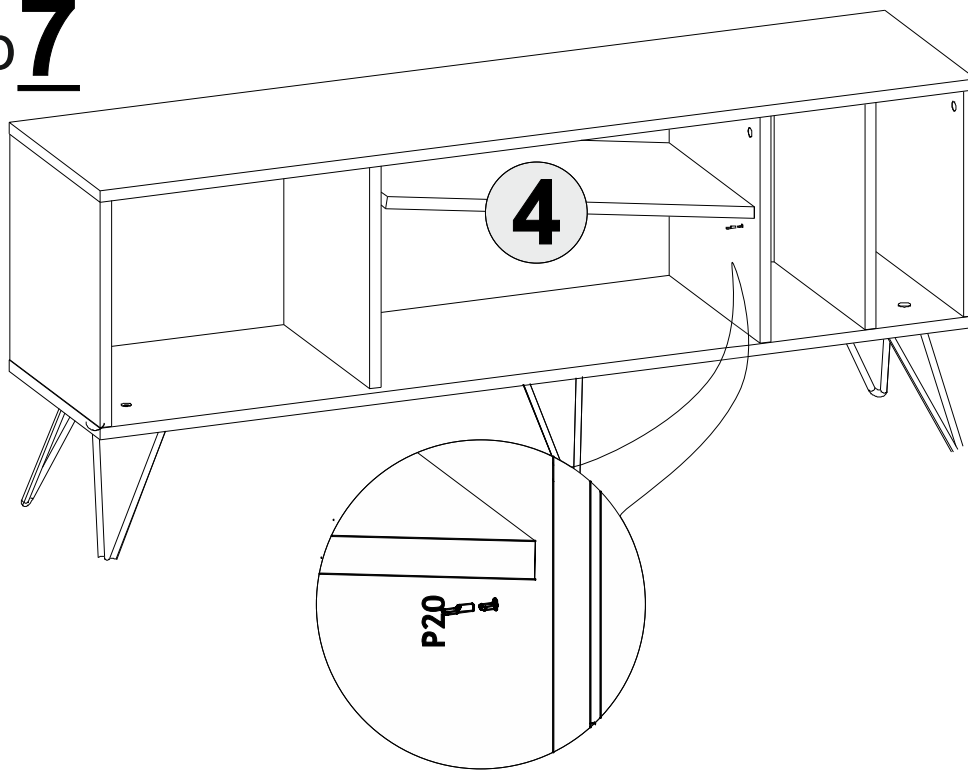


Step 6

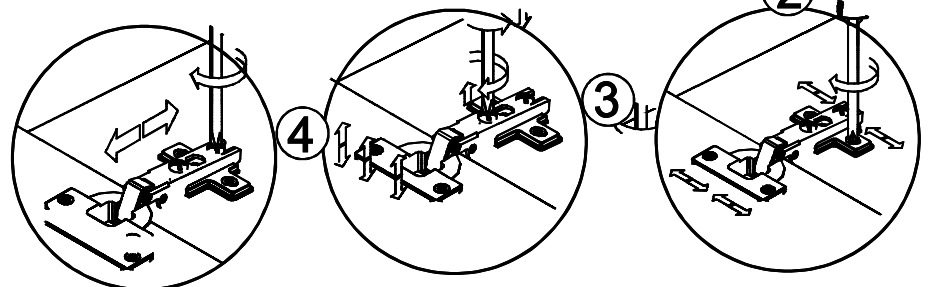
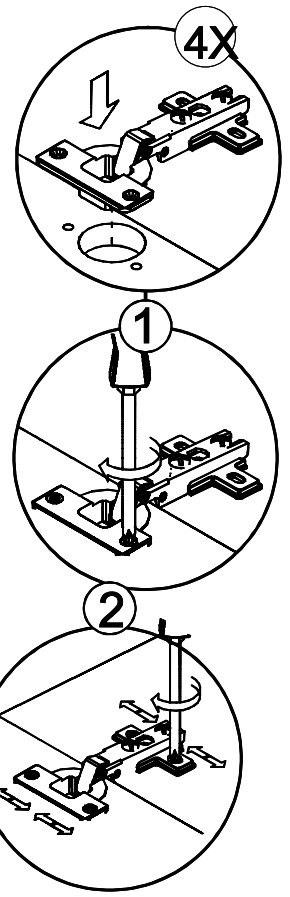
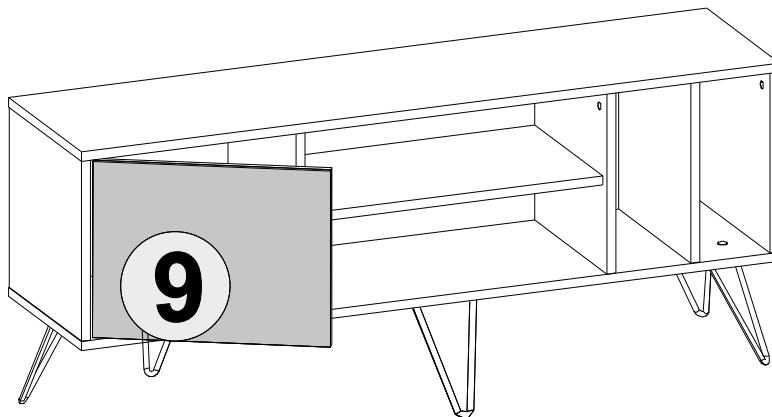
Place the back panel (part 10) as shown below and tap the nail (A28) with a hammer to drive it into the wood. Keep driving the nail until its head is either flush with or below the surface of the wood. Use all the nails given in the hardware pack for best result.



Step 7



Step 8



www.decorotika.us

You may reach us via assembly@decorotika.com for assembly questions. For all other inquiries please contact directly with marketplaces which you have placed your order. You may also reach us via assembly@decorotika.com for all inquiries regarding the orders you have placed on www.decorotika.us. Please mention your order number in your e-mail. Thanks for choosing our products.

e-mail: assembly@decorotika.com

Europe Phone: +90 553 966 7517

Working Hours: Mon- Fri (07 am - 05 pm)