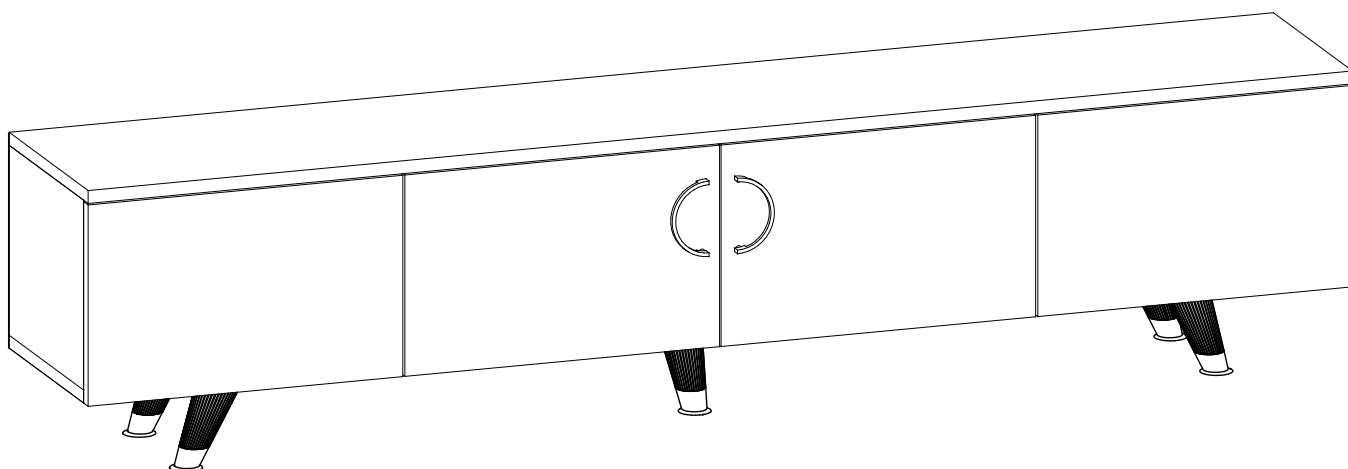


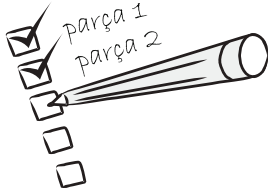
LUXiA TV STAND



Dear Customer,

We design and produce our products for people to love and have fun with them as we do.

The product you bought was subjected to all sorts of tests and control before sending out to you.



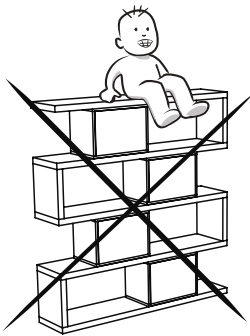
Before start assembling, please check the whole components and accessories according to the lists. If you bought more than one product, to prevent confusion be sure that you completed the first product. Then start the other product's assembling.



Before start assembling, please clean all the components with a damp cloth. Also for usual cleaning, this will be enough.



Although all the products are produced and packed carefully, sometimes happen that some component is damaged during the transportation. In such a case please check the missing or damaged part and do not hesitate to contact us. You can send



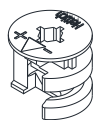
Do not use your furniture for out of purposes. If you would like to use it, please contact us for further questions.

Do not directly contact your furniture with excessive heat, cold and humidity because the product can be affected..

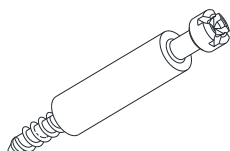
ATTENTION !!

Minifix is the main connection material used in products.
Before starting assembly, please check the drawings below...

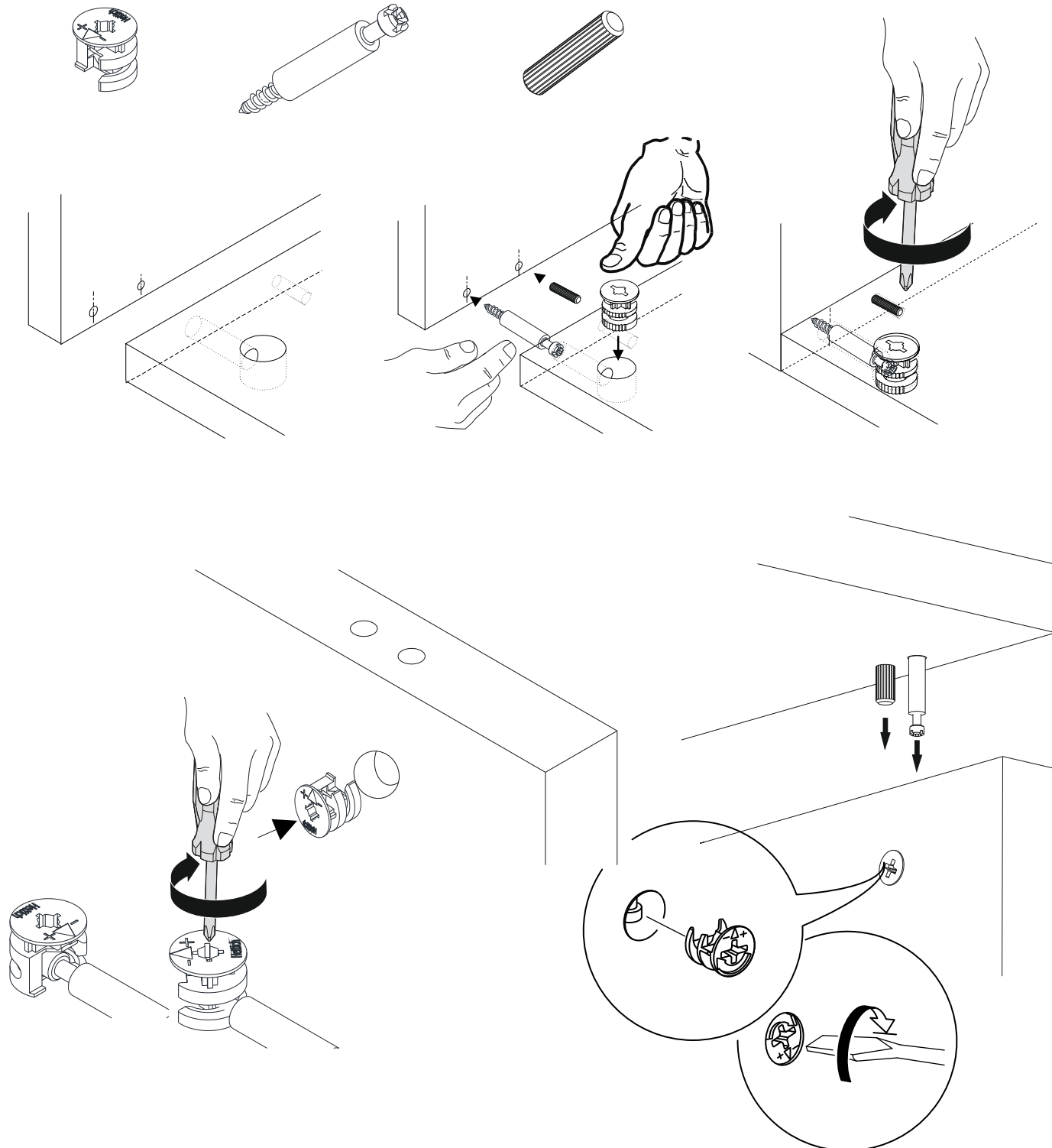
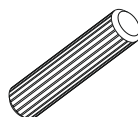
MINIFIX BODY



MINIFIX SHAFT



DOWEL

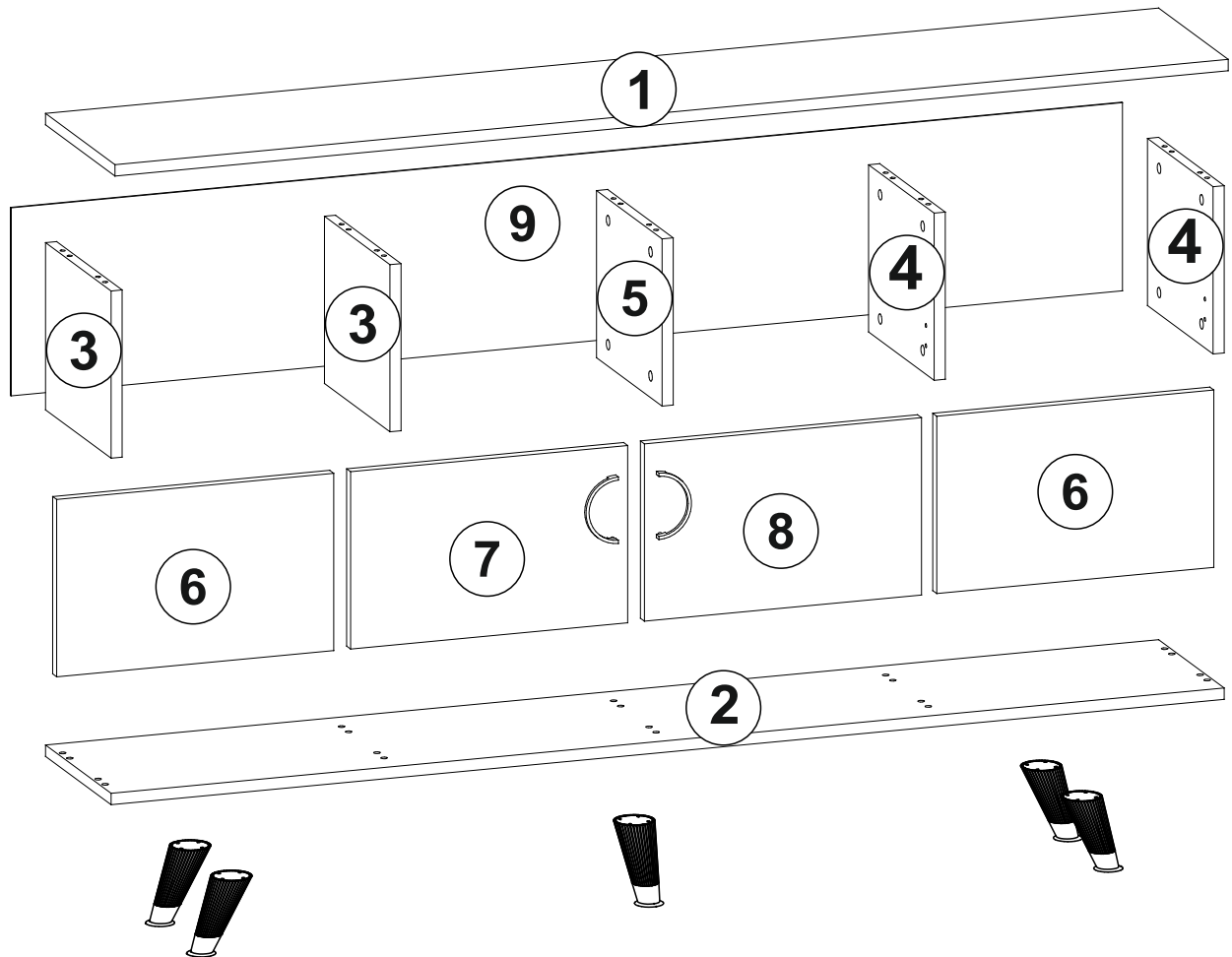


ACCESSORY LIST

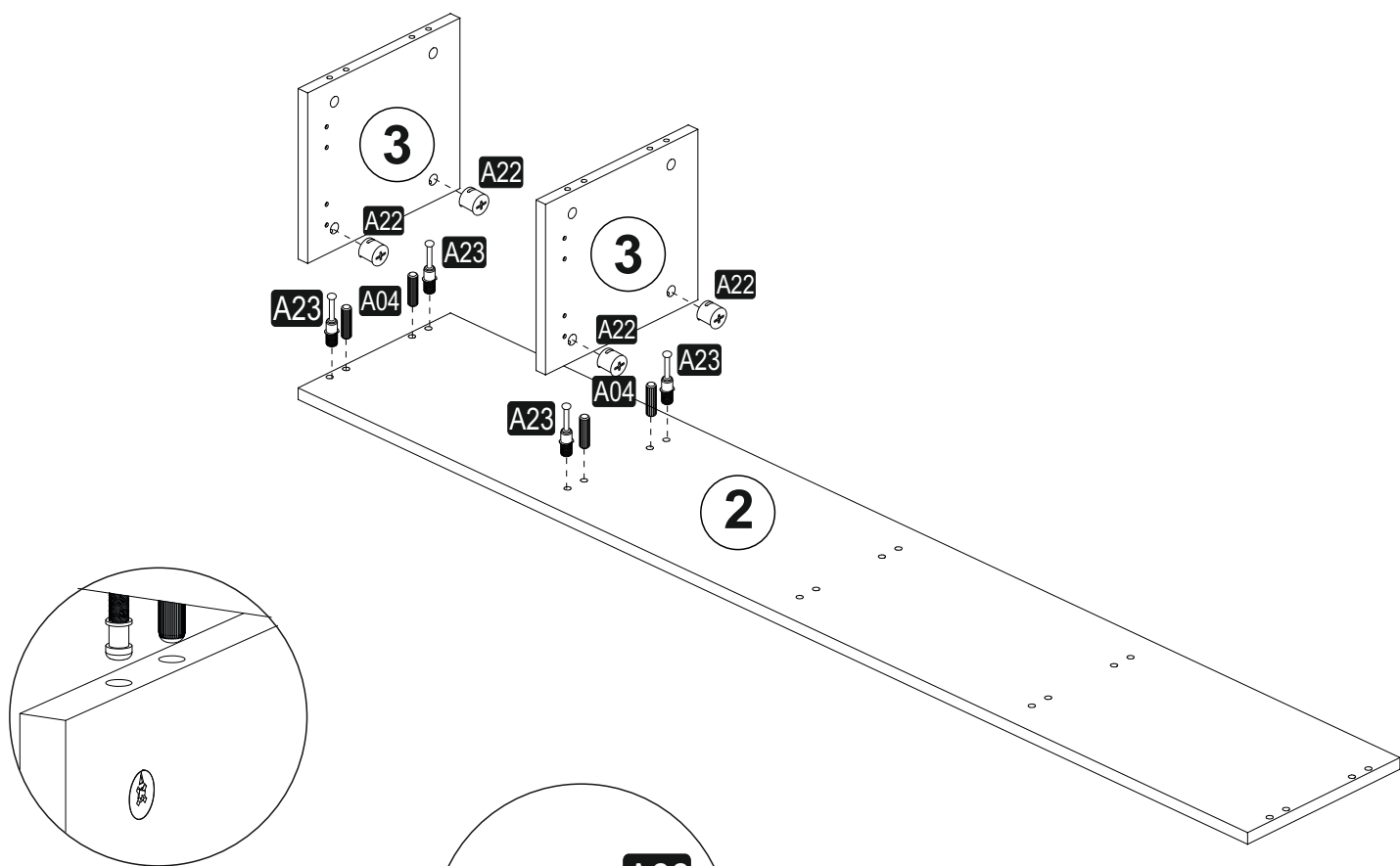
LUXIA TV STAND

A23 MINIFIX SHAFT MINIFIX MİL 8x34 20x	A22 MINIFIX GÖVDE MINIFIX BODY 15x14 20x	A04 DOWEL KAVELA 8x30 20x	A49 handle screw kulp vidası 20mm 4x	A15 96mm GOLD 2x
A48 AC 40x	A18 3,5x18 57x	C01 DM 8x	C04 MA 8x	V51 BYZ ALTN 5x
A06 18 mm BEYAZ WHITE 20x				

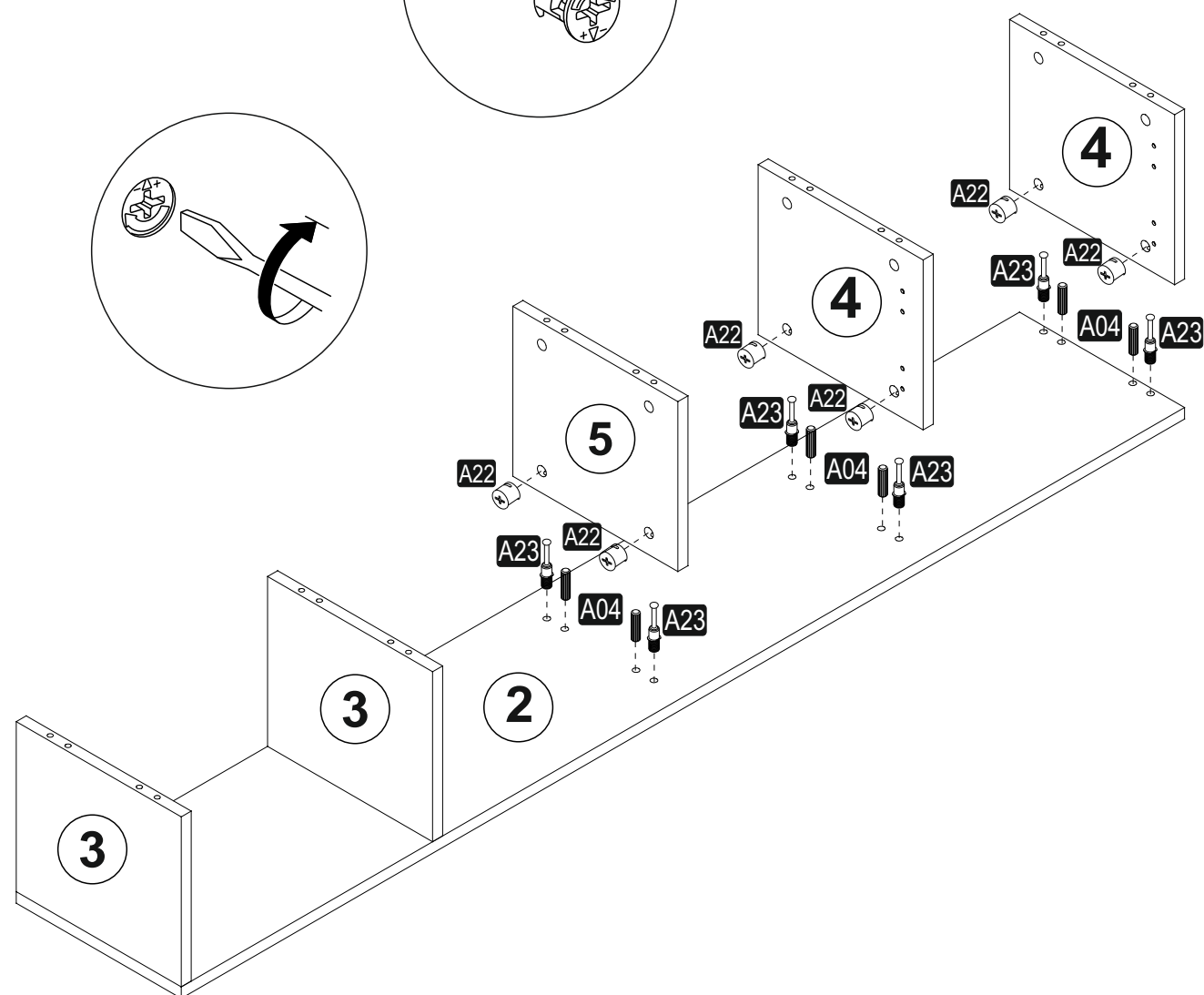
GENERAL VIEW



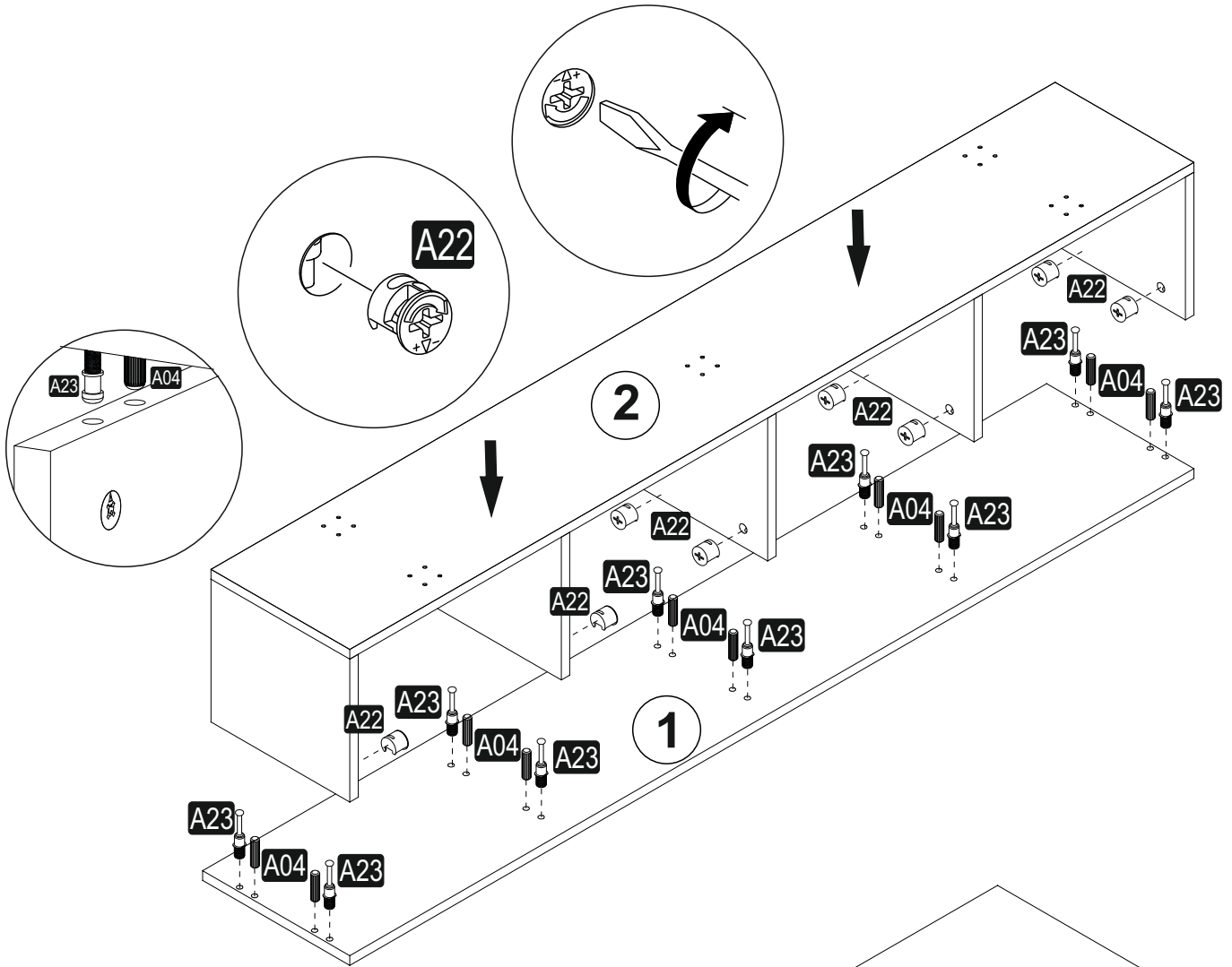
1



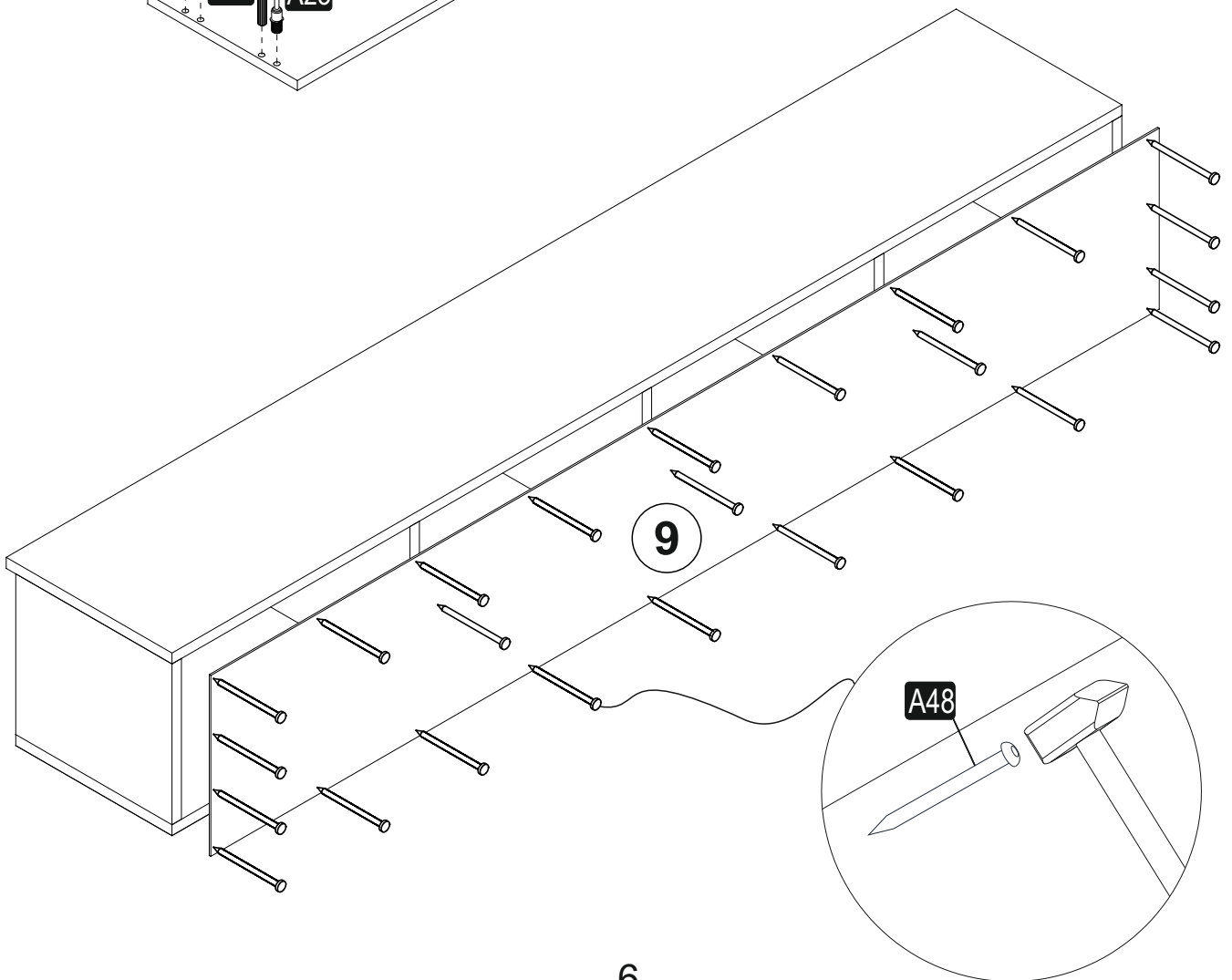
2



3



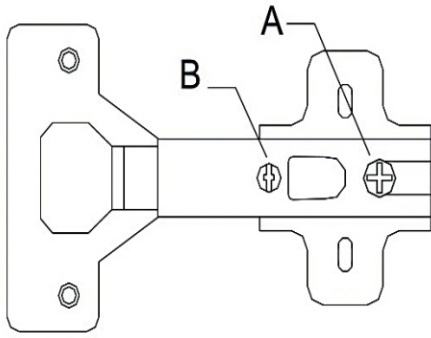
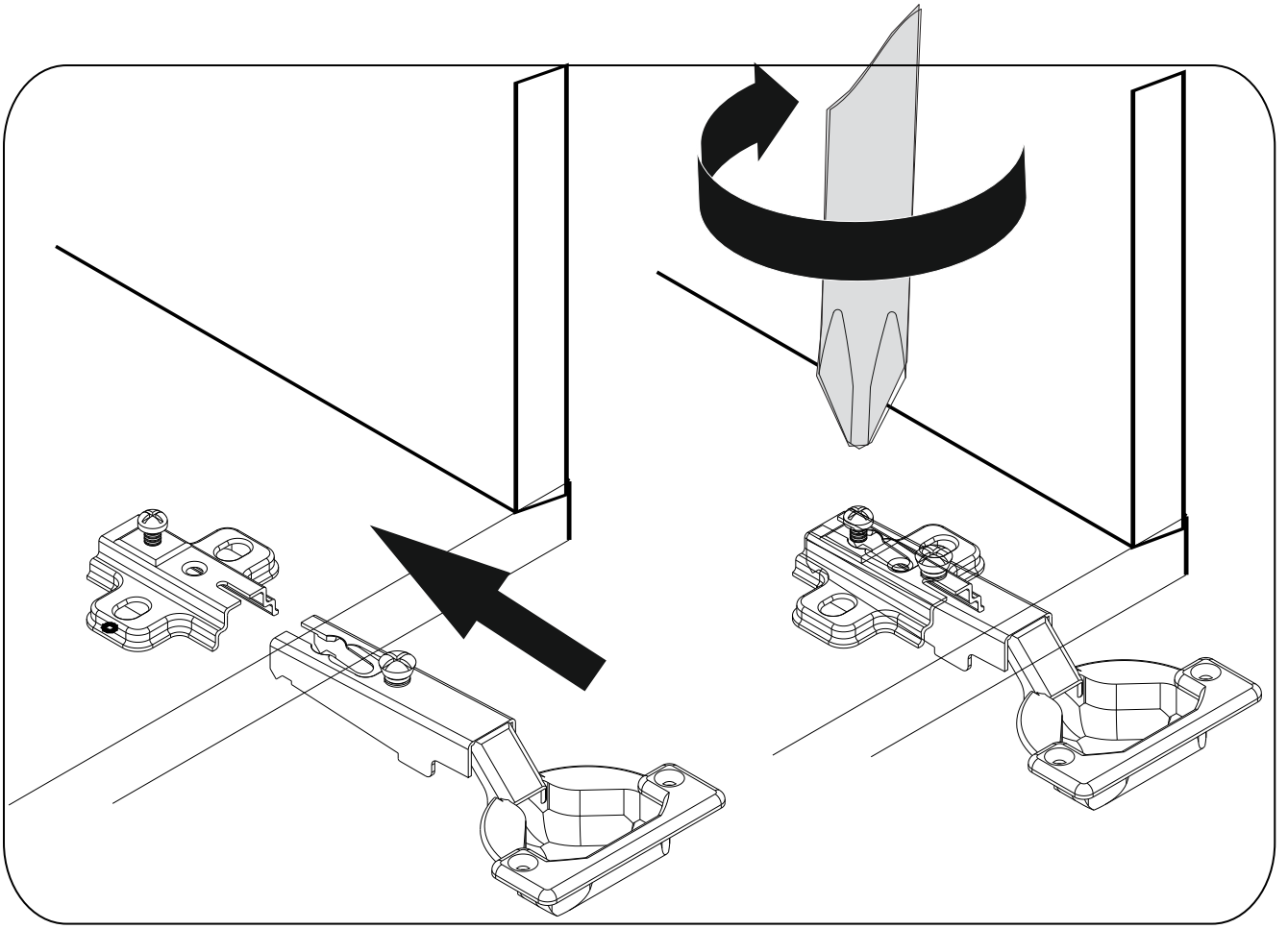
4



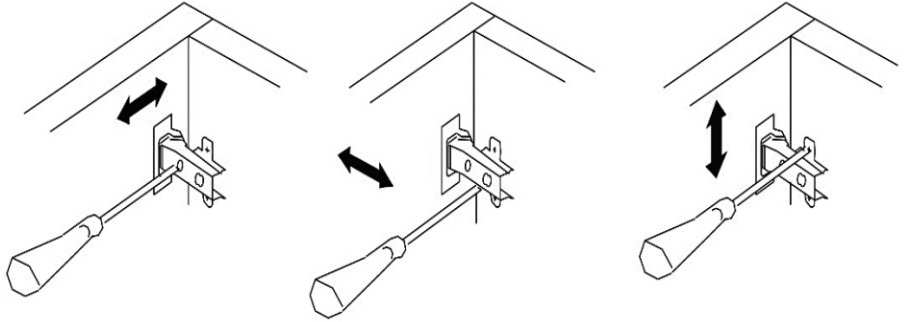
This diagram illustrates the assembly of the lower cabinet structure. It shows three main steps:

- Step 6:** Attaching the side panel (6) to the main frame using hinges (A49) and screws (A15).
- Step 7:** Attaching the front panel (7) to the side panel (6) using hinges (A49) and screws (A15).
- Step 8:** Attaching the front panel (8) to the main frame using hinges (A49) and screws (A15).

Callouts include A49 (hinge), A15 (screw), C01 (hinge), and A18 (screw). A circular inset shows a detail of the hinge mechanism.



A= menteşe bağlama vidası / to connect the hinge to the door
 B= kapak ayar vidası / to arrange the door



oklar kapağın ayarlama yönünü gösterir.
 arrows to show the directions for arrangement of doors.

